



HOXIE SCHOOL DISTRICT

2021-2022 READY FOR LEARNING PLAN

08/16/2021

As of August 16, 2021, this is Hoxie School District's plan to start school safely for the 2021-2022 school year.

BACK TO SCHOOL

Parents/Guardians,

School will begin Monday, August 16, 2021. All districts in Arkansas are currently operating under the guidance of the Governor of Arkansas, the Arkansas Department of Health (ADH) and the Arkansas Department of Elementary and Secondary Education (DESE). Under their direction, we will do our best to provide a safe environment for students to learn and stay healthy. This document outlines recommendations and procedures for returning to school in August. This is a living document and may change according to new requirements provided by the Governor, ADH, and DESE. The health and safety of our students is priority and changes will be made as new guidance is given to schools. Please watch the school website and social media for updates.

Hoxie School District

HOXIE SCHOOL DISTRICT READY FOR LEARNING COMMITTEE

Kelly Gillham, Superintendent

Jennifer Huff, Curriculum Coordinator

Tracy Gates, Elementary Principal

Dr. Lori McKenzie, High School Principal

Angie Abbott, Point of Contact

Darrell Parks, Technology Director

Bray Felton, Child Nutrition Director

Tom Sears, Facilities/Transportation Director

Marva Ratliff, High School Math Teacher

Misty Brand, Elementary and High School Teacher

Jerry Decker, High School History Teacher

Debra Cook, School Nurse

Gina Cornish, School Nurse

Andrea Vancil, High School Counselor

Randal Puckett, Dean of Students

Katie French, Elementary Counselor

Laura Wright, High School English Teacher

Bryan Miller, High School Science Teacher

Darlene Shoe, CTE Teacher

Erika Bruce, Kindergarten Teacher

Sharon Hickman, First Grade Teacher

Amy Barnhill, Dyslexia Interventionist

Ashlyn Ellis, Third Grade Teacher

Nikki Johnson, Third Grade Teacher

Stephanie Greer, Fourth Grade Teacher

Kim Washburn, Fourth Grade Teacher

Lizabeth Robinson, Fifth Grade Teacher

Dana Bigger, Sixth Grade Teacher

Larry Forrester, Dean of Students



ACADEMICS

HOXIE ELEMENTARY OPEN HOUSE

Hoxie Elementary will host an Open House using a staggered schedule on August 12, 2021. A schedule will be shared on the school's social media page with each grade level's scheduled time. This will allow families to interact with homeroom teachers and learn about the upcoming school year in smaller groups.

5:00-5:45 pm – Grades K, 3, 4

6:00-7:00 pm – Grades 1, 2, 5, 6

HOXIE HIGH SCHOOL OPEN HOUSE

- Hoxie High School will host Open House on a staggered schedule to minimize close contact between individuals on August 12.
 - Grades 8-9 will be 5:30-6:00 pm
 - Grades 10-12 will be 6:00-6:30 pm

SEVENTH GRADE ORIENTATION

- Hoxie High School will host a Seventh Grade Orientation on August 12, 2021, at 5:00 pm in the cafeteria.
- Families will be able to spread out and social distance to avoid close contact with individuals.

CURRICULUM

- We will ensure the continuity of teaching and learning by providing a guaranteed and viable curriculum that includes blended learning and diagnostic assessments.
- Families may choose Face-to-Face or Blended Learning.
 1. Face-to-face learning will consist of on-site instruction in a classroom and interaction with teachers.
 - In the event of a school closure, students will pivot to off-site alternate methods of instruction (AMI).
 2. Blended Learning will be off-site and offered through the [Hoxie Online Academy](#) (click on the link for more information about Hoxie Online Academy).

```
graph LR; A[Hoxie Online Academy will use Florida Virtual School (FLVS) as the digital learning provider.] --- B[Students enrolled in Hoxie Online Academy will learn off-site.]; A --- C[Teachers will create courses using FLVS by merging content from the vendor with content created by teachers.]; A --- D[The primary instruction will be provided by a teacher of record employed by Hoxie School District.]; A --- E[The teacher will ensure that all digital learning courses are aligned to the Arkansas learning standards.];
```

Students enrolled in Hoxie Online Academy will learn off-site.

Hoxie Online Academy will use Florida Virtual School (FLVS) as the digital learning provider.

Teachers will create courses using FLVS by merging content from the vendor with content created by teachers.

The primary instruction will be provided by a teacher of record employed by Hoxie School District.

The teacher will ensure that all digital learning courses are aligned to the Arkansas learning standards.

HOXIE ONLINE ACADEMY

HOXIE ONLINE ACADEMY FOR ELEMENTARY

-
- We will have one teacher in elementary K-6 dedicated to our online students.
 - In grades K-6, students will participate in both asynchronous activities and live instruction.
 - Students in grades K-2 will participate in daily live instruction through Microsoft Teams for literacy. Instruction will be based on the Science of Reading and include the essential components.
 - Targeted interventions will be provided for students in small groups or one-on-one in both onsite and live virtual sessions through Microsoft Teams.

HOXIE ONLINE ACADEMY FOR HIGH SCHOOL STUDENTS

Students participating in Hoxie Online Academy will utilize Buzz and Virtual Arkansas to access courses.

Students have the option to come on-site to participate in activities, electives, or sports.

Teachers will communicate each day with on-line students to monitor their progress, answer questions, offer suggestions, and provide extra resources.

Students are expected to meet their weekly goals, and their attendance is based on meeting the weekly goals.

Students that qualify for speech, OT, PT, and Dyslexia come to campus to receive their therapy.

Students with an IEP or 504 come to campus to receive services unless otherwise arranged through their annual review.

UNFINISHED LEARNING

- Diagnostic assessments will be used to identify students' strengths and weaknesses and develop individual instructional plans for addressing unfinished learning and shape decisions to be made for new learning.
- When students return in the fall, they will be assessed using diagnostic assessments, that will inform teachers of the students' academic levels and what interventions are needed to fill learning gaps.
- Students will be monitored for progress throughout the school year to adjust interventions and monitor student progress in learning.

UNFINISHED LEARNING



- Teachers will design and plan lessons to address unfinished learning using data from:
 - ACT Aspire Assessments
 - Renaissance STAR assessments
 - Teacher created essential standards matrixes

DYSLEXIA SERVICES—ONSITE AND VIRTUAL OPTIONS

- In case of a school closure, students who receive dyslexia interventions may continue to come to the school for small group or one-on-one in-person therapy.
- If parents/guardians choose virtual sessions, the interventionist will work one-on-one with the student through the virtual platform, Microsoft Teams.
 - If a student does not have proper internet at their home, the school will provide the service with a Kajeet, wireless internet connection.
- The students would receive an intervention kit that includes all necessary materials to keep at home, including a laptop and other manipulatives needed to fulfill the objectives of the session.

Dyslexia Team Contact Information:

Lisa Vankirk, lisa.vankirk@hoxieschools.com

Amy Barnhill, amy.barnhill@hoxieschools.com



FACILITIES AND TRANSPORTATION

SCHOOL CAFETERIA



The school will follow ADH recommendations for eating in the cafeteria and limit the capacity of students in the cafeteria.



Proper sanitation of all areas will be completed after each meal.



Parents are encouraged to send a filled water bottle with their students since water fountains will not be available.

CLEANING AND SANITIZING



High touch surfaces and restrooms will be cleaned on a continuous basis throughout the day.



Sanitizing wipes will be provided for each classroom.



Hand sanitizer will be provided throughout campus.

SCHOOL BUS

-
- Bus transportation will be provided for all students. There are no plans to change bus schedules or bus stops.
 - Assigned seating will be used on buses, sitting families together when possible.
 - Upon arriving at school, in order to monitor social distancing, students will go to a designated area on campus.
 - The health and safety of our students is priority and guidelines may change according to CDC and ADH recommendations. Changes will be made as new guidance is given from ADH, CDC, AAA, and the Division of Elementary and Secondary Education (DESE).

CLASSROOMS

-
- Classroom spaces do not allow for 6 feet of physical distance between students, but teachers will arrange seating to create as much physical distancing as possible.
 - Sanitizing wipes will be provided for each classroom.
 - Hand sanitizer will be available in all classrooms.
 - Face masks will be provided for those who CHOOSE to wear a mask.



STUDENT AND FAMILY SUPPORT

PARENT SUPPORT

-
- Families and students will be able to communicate with teachers, counselors, and administrators through the following:
 - Email
 - Phone call
 - Teams conference
 - Message through the learning management system
 - Message through messaging apps (Remind, GroupMe, etc.)
 - In person conference by appointment with health and safety guidelines in place

STUDENT SUPPORT DURING AMI LEARNING DAYS

- Teachers will be available during the school day to answer questions and provide academic support
 - Phone calls
 - Microsoft Teams virtual face-to-face meeting
 - Email
 - Messaging apps such as Remind and GroupMe
- School counselors will organize small groups for non-confidential Team meetings and address topics such as norms for online learning, behavior, effort, etc.
 - Individual sessions will be scheduled on an as needed basis
- In the event of future closure, students will continue to receive services for dyslexia, OT, PT, speech, and SPED.
- Breakfast and lunch will be provided in the event of a school closure



HUMAN CAPITAL

TEACHER SUPPORT

Every teacher will be
issued a laptop

Individualized
support will be
provided for all
teachers throughout
the year

COVID LEAVE

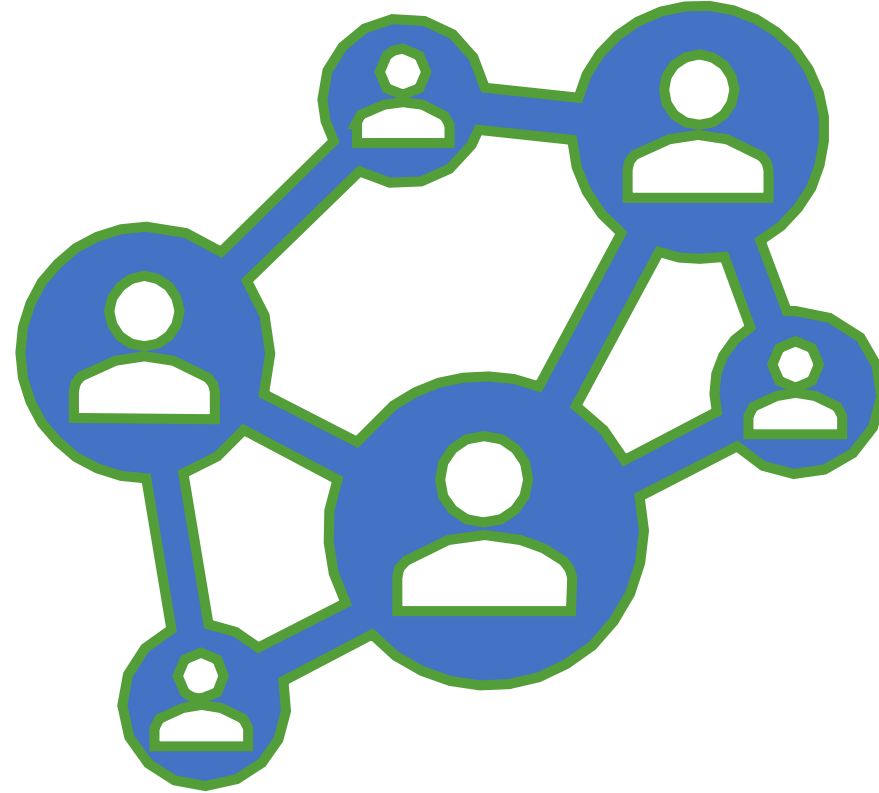
- The school district will provide 10 days to each employee in the 2021-2022 school year. If more than 10 days are taken for Covid leave, then each employee must use sick days.
- Employees may use Covid leave for the following reasons:
 - An employee must go home to quarantine because they are a close contact
 - An employee tests positive for Covid and must isolate
 - An employee is experiencing symptoms and is going to test and quarantine awaiting results
 - An employee needs to care for an immediate family member (child or spouse) due to Covid

VACCINATION

-
- A community vaccination clinic will be open on campus during open house for employees and families wishing to be vaccinated.
 - Employees that are fully vaccinated, may present their vaccination card to the central office to receive a one-time payment of \$200.

DAILY PRACTICES

ALL EMPLOYEES WILL WORK
TOGETHER TO ENSURE A SAFE
AND HEALTHY LEARNING
ENVIRONMENT FOR
STUDENTS





DISTRICT OPERATIONS

ACT 1240 WAIVERS

- In order to limit the cafeteria capacity, breakfast will be served in the classroom for elementary students requiring additional staff to monitor students.
- In high school, additional staff will be need to perform additional duties in the cafeteria to ensure social distancing guidelines are followed.
- One teacher in elementary (K-6) will be dedicated to our online students.
- Teachers will perform non-instructional duties by sanitizing their classrooms throughout the day to help stop the spread of COVID-19.
- Students will work virtually and at their own pace, so they will not have a scheduled recess.
- Students work at their own pace and may complete their assignments outside the traditional school clock schedule. Although the asynchronous course work will take the average student 120 clock hours per course credit to complete, students working at their own pace may complete work in less than the 120 clock hours required per course credit.
- Attendance will be determined by students' progress in completing goals/assignments each week.
- Teachers in grades 7-12 will be teaching both in person classes and online and could possibly rise above 150 students.

FACE COVERING


- The Hoxie School District will follow the guidance of the Governor and will make wearing a mask on campus an option and not a requirement. We ask that all parents, students, and staff make an informed decision whether to wear a mask on campus. Please respect the decisions of others and not criticize others for wearing or not wearing a mask. Any student or staff who chooses to wear a mask on the Hoxie campuses will be provided a mask upon request.
- The Hoxie School District will continue to make the safety of students and staff a priority. Social distancing and contact tracing will continue to be practiced in the district. Deep cleaning, sterilization will continue in all buildings.
- Masks may still be required at events in other districts in which we are guests. If this is the case, we are expected to follow the rules of the district we are visiting.
- The health and safety of our students is priority and guidelines may change according to a rise in COVID numbers within the community and guidance from the ADH, CDC, and the Division of Elementary and Secondary Education (DESE).

HEALTH SCREENING

- Employees and guests will be screened on campus daily. Temperatures will be taken with a no-touch thermometer.
- Students will be screened at home. Parents are encouraged to screen their children using the current screening guidelines from the Arkansas Department of Health prior to entering any school bus or building.
 - Has your child had a fever of 100.4°F or greater in the last 2 days?
 - Has your child had a cough, difficulty breathing, sore throat, or loss of taste or smell?
 - Has your child been in contact with a person known to be infected with COVID-19 within the previous 14 days?
 - If you answer yes to any of these questions, please keep your child at home and contact the office.
- The health and safety of our students is priority and guidelines may change according to CDC and ADH recommendations. Changes will be made as new guidance is given from ADH, CDC, AAA, and the Division of Elementary and Secondary Education (DESE).

CHILDREN SICK AT SCHOOL

If a student comes to school sick, the school nurse or designee will screen the student and check their temperature. If temperature is over the ADH guidance, the student will be sent home and will need to be fever free for 48 hours without medication before returning to school.



Students will wait in a designated area, with supervision, until parents arrive for pick-up.



The health and safety of our students is priority and guidelines may change according to CDC and ADH recommendations. Changes will be made as new guidance is given from ADH, CDC, and the Division of Elementary and Secondary Education (DESE).

PE, ART, MUSIC, AND OTHER EXTRA CLASSES

Students will continue to participate in activity classes, check out library books, and receive guidance and gifted instruction. In some cases, the activity teacher may present their lesson in the student's classroom and/or follow an adjusted schedule.

RECESS

Elementary students will have outdoor play time with restrictions that limit the number of students they come in contact with.

LARGE VENUE ACTIVITIES

(BALLGAMES, CONCERTS,
ASSEMBLIES, ETC.)

-
- Large group gatherings (pep rally, assemblies, concerts, etc.) will follow current ADH guidelines.
 - Athletic and club gatherings will be mandated by the Arkansas Activities Association (AAA).
 - The health and safety of our students is priority and guidelines may change according to CDC and ADH recommendations. Changes will be made as new guidance is given from ADH, CDC, AAA, and the Division of Elementary and Secondary Education (DESE).

VISITORS

-
- Under current ADH guidance, visitors will not be allowed in the school except for the reception area.
 - Parents and guardians may only walk their student to the school entrance.
 - Parents of entering kindergarten students will receive a letter in the mail with guidance about the first day of school.
 - The health and safety of our students is priority and guidelines may change according to CDC and ADH recommendations. Changes will be made as new guidance is given from ADH, CDC, AAA, and the Division of Elementary and Secondary Education (DESE).



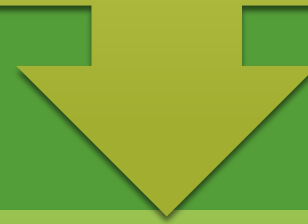
COMMUNICATION

COMMUNICATION PLAN

-
- Hoxie School District will communicate with parents, students, and the community regarding day-to-day expectations. This will be accomplished through social media, the school website, and the One Call communication system.
 - Communication will occur regularly and promptly at the district and building levels.
 - Initial communication regarding the Ready For Learning Plan will be posted to the school website before students return in August.

COMMUNICATING CHANGES IN ROUTINES AND PROCEDURES

Communication with parents, students, and the community will be provided through multiple avenues in order to reach all stakeholders.



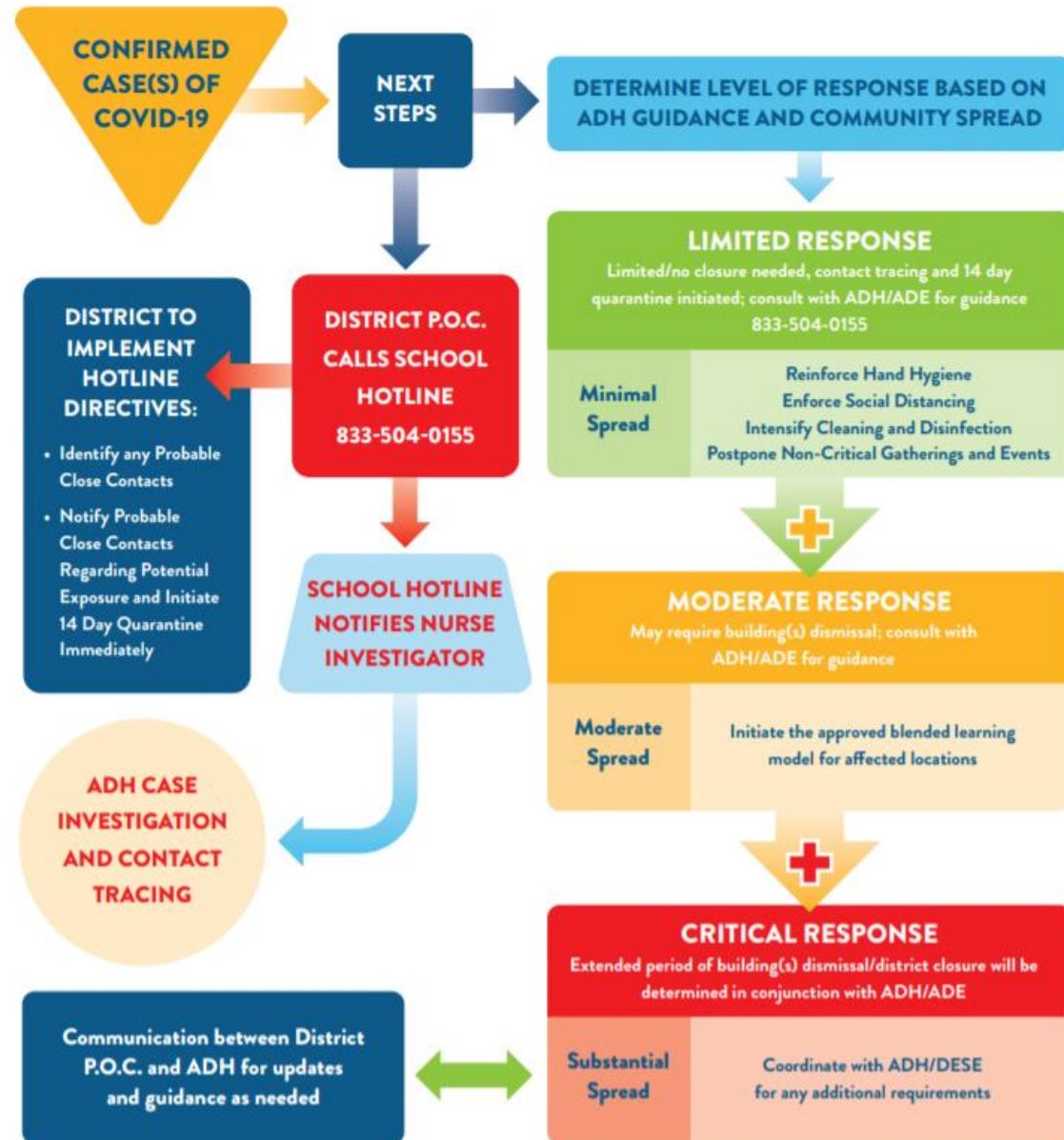
Forms of communication include:

Email	Phone calls	One Call alerts	Social Media	School website
-------	-------------	-----------------	--------------	----------------

COMMUNICATING COMMITTEE DECISIONS



- Communication decisions will be communicated with the public in the following manner:
 - Email
 - Updates through monthly board meetings
 - Local media coverage
 - Social media
 - School website



SCHOOL COMMUNICATION FLOW CHART

CONTACT INFORMATION

Contact

Kelly Gillham, Superintendent

- 870-886-2401 ext. 181
- kelly.gillham@hoxieschools.com

Contact

Tracy Gates, Elementary Principal

- 870-886-2401 ext. 205
- tracy.gates@hoxieschools.com

Contact

Dr. Lori McKenzie, High School Principal

- 870-886-2401 ext. 107
- lori.mckenzie@hoxieschools.com

Contact

Angie Abbott, District Point of Contact

870-886-2401 ext. 107 or Cell: (501-703-4772)

Angie.abbott@hoxieschools.com



UNDERSTANDING THE TERMINOLOGY

COVID-19 TERMINOLOGY

- **Point of Contact (P.O.C.)** - A district employee appointed by the Superintendent to be responsible for contacting the School Hotline when a Confirmed Positive is identified within the district. This person will work with other school personnel to identify Probable Close Contacts within the district and share information with and be the liaison between the school district and ADH. This person must be accessible after hours and weekends.
- **Probable Close Contact** - District identified individuals that have likely been within 6 feet for 15 cumulative minutes or longer within a 24-hour period to a person who has tested positive for COVID-19. This person(s) will be expected to self-quarantine immediately for **10** days from the last date of contact with the positive case and await their Close Contact status to be confirmed by ADH Contact Tracing. A quick response to identify and quarantine will slow the possible transmission of the virus. P.O.C. will notify probable close contacts.

COVID-19 TERMINOLOGY

- **Close Contact** - An individual confirmed by ADH Contact Tracing who was within 6 feet for 15 cumulative minutes or longer within a 24-hour period a person who has tested positive for COVID-19 during the infectious period. The Close Contact will be required to self-quarantine for **10** days from the last date of contact with the infected person. They will be in contact with ADH for the duration of the quarantine period. It is highly recommended that all close contacts get tested for COVID-19. If the individual is asymptomatic and wants to test, they may return after 7-day quarantine if they follow the following procedure:
 - They can only test after five (24-hour periods) since exposure
 - The PCR test and the rapid antigen test will both be accepted
 - They can return to school if the test result is negative, and they bring documentation showing that they tested a full five days after exposure
 - If they return on day 8, they must wear a mask for the next 7 days regardless of age (If they develop symptoms they will need to go home)

COVID-19 TERMINOLOGY

- **Secondary Contact** - An individual who has had contact with someone identified as a Close Contact to a person who has tested positive for COVID-19. These individuals do not require quarantine but are encouraged to monitor for signs and symptoms of COVID-19.
- **Quarantine** - Required for someone identified as a Close Contact to a positive case of COVID-19. This person must remain at home and avoid all public activities for **10** days from the last date of contact with the positive case, even if they receive a negative test result. The incubation period in which symptoms of COVID-19 may develop is considered **10** days.
- **Isolation** - Required for someone who has tested positive for COVID-19. This person must attempt to completely separate themselves from others for a minimum of 10 days; however, other criteria may apply when the person is either symptomatic or asymptomatic. The ADH Case Investigator will issue an official ADH letter of release when the individual is ready to return to work or school.
- **Case Investigator** - A nurse from the Arkansas Department of Health (ADH) will be assigned to the case of the confirmed positive. This nurse will maintain communication with the positive case throughout the isolation period, and issue an official ADH letter of release when the individual is ready to return to work or school.

COVID-19 TERMINOLOGY

- **Contact Tracing** - ADH Case Investigators and Contact Tracers reach out to COVID-19 patients after a positive test result is confirmed in order to identify the patient's close contacts. The P.O.C. will not be responsible for contact tracing, but will work with other school personnel to identify Probable Close Contacts within the district and share that information with the ADH for the purpose of Contact Tracing
- **Incubation Period** - The period between exposure to an infection and the appearance of the first symptom.
- **Infectious Period** - The two days prior to the onset of symptoms or the two days prior to the test date, if asymptomatic, until the individual is released from isolation by ADH.
- **Symptomatic** - Exhibiting or involving symptoms of an illness. Symptoms for COVID-19 may appear 2-14 days after exposure to the virus.
- **Asymptomatic** - Testing positive, but not producing any symptoms. COVID-19 transmission in the absence of symptoms reinforces the value of measures that prevent the spread by infected persons who may not exhibit symptoms despite being infectious.
- **Community Spread** - People have been infected with the virus in an area, including some who are not sure how or where they became infected. The level of community spread within the State of Arkansas will be determined by the ADH. Factors used in determination may include active cases or growth rate within the community or region. Schools are encouraged to consult with ADH for guidance when determining a response level.